



The great advantages of short set-up times.
The new T 765 Efficiency Automatic

T 765 EA



➤ It saves time so that you can save money.
The new T 765 Efficiency Automatic



Special equipment:
Noise damping device

Frequently changing, increasingly small jobs... this development is even affecting machines that process the most common 70 x 100 cm / 40" full size print format. Reducing set-up times is of the utmost importance for companies that want to remain competitive. The new MBO T 765 Efficiency Automatic buckle folding machine combines the attractive price/performance ratio of the Efficiency series with the ease-of-use and short set-up times of an automated machine – with an extremely appealing price!

The advantages at a glance

Best price/performance ratio thanks to the use of MBO components and quality standards

Extremely short set-up times thanks to the automation of the most important functions

High-quality folding results thanks to sophisticated MBO technology and design

Reliability and production safety thanks to long lifetimes and stability during continuous operation

Maximum flexibility for a wide range of products and extremely small print runs

VARIO-Control 15" color TOUCHSCREEN for optimal overview and operator guidance

➤ Operator convenience and flexibility newly defined: The new MBO-VARIO-Control



Tried-and-tested MBO technology + new control system + partial automation = significantly shorter set-up times and added operating comfort.

Ideal for small quantities, quickly changing jobs:

With the new MBO-VARIO-Control for Efficiency Automatic machines, set-up and change-over can be done in no time at all! Just enter the folding imposition and the sheet size with a fingertip! The rest, like for instance the minimum sheet gap, depending on the type of fold and a precisely adjusted speed profile over all folding units, is exactly calculated through VARIO-Control.

Standard equipment:

- Intuitive graphical operator guidance
- Integrated folding imposition catalog
- Automatic set-up of sheet gap, sheet infeed and speed of the folding unit
- Precisely adjusted speed profile (with readjustment of all subsequent folding units)
- Display of fault and fault location as written text
- Operator and service diagnosis

Optional:

- Link to the MBO-DATAMANAGER
- Installation of RAS Remote Access Service
- Gatefold control
- Sheet monitoring throughout the entire machine, including length control, tracking and calibration sheet acceptance at set-up



MBO-VARIO-Control – the new generation of control that combines extreme efficiency and operator convenience with MBO's distinctive precision fold roller setting accuracy of 1/1000 mm.

One TOUCHSCREEN, one software – all operator opportunities

The new TOUCHSCREEN operation does not need additional press buttons. Its software, to be operated intuitively, enables the easy setting of every folding imposition: the most common standard folding types have already been pre-configured in the “quick mode” and simply have to be selected; whereas in the “expert mode” every combination that is possible and expedient, can be prepared. Faulty operations will be averted. Even production malfunctions can be easily and quickly identified, as the control screen displays fault location and cause of the fault in written text.

Everything under control – at the automation

A new hardware concept, optimized for the requirements of automation, accelerates the automated setting tremendously – at constant accuracy. Another simplification: a common plug for current and control instead of two used in the past. These and many more proven MBO highlights, such as the automatic clearing of remaining sheets, removal of control sheets on each folding unit, shingle control and batch counter at deliveries etc... make the MBO-VARIO-Control a benchmark for a completely new generation of control systems.



The perfect combination of great ease-of-use and low price

For everyone who needs an automatic folding machine for the 70x100 cm / 40" full size format range, the new T 765 is the most cost-effective product to date, since exactly those components that have a decisive influence on set-up times are automated, that is, the components whose automation saves the most time: Rollers and buckle plates. This means that you benefit from significantly reduced set-up times and an easy-to-operate machine – at the same time as enjoying a great-value price.

This machine is ideally suited to businesses that take on frequently changing, relatively small jobs, since it combines a high level of reliability and the tried-and-tested technology of the MBO B 30 Efficiency basic model with an innovative automation package: Thanks to the new MBO-VARIO-Control system, the T 765 Efficiency Automatic is also perfectly designed for the requirements of digital print shops.

Equipment

- MBO VARIO Control incl. touch screen
- R 765 continuous feeder
- Antistatic lattice-type alignment table
- Sheet infeed via suction wheel
- Sheet alignment via ball rail
- 4 buckle plates
- Continuous sheet stop in buckle 1
- RAPIDSET automation
 - Buckle plates and deflectors
 - Fold rollers and slitter shafts
- Belt drive – low-maintenance and low-noise
- Spiral fold rollers with hard PU roller coating
- Stainless slitter shafts, quickly removeable by plug bearings
- Electrically secured safety device above slitter shafts
- Scoring, perforating, and cutting devices for standard jobs

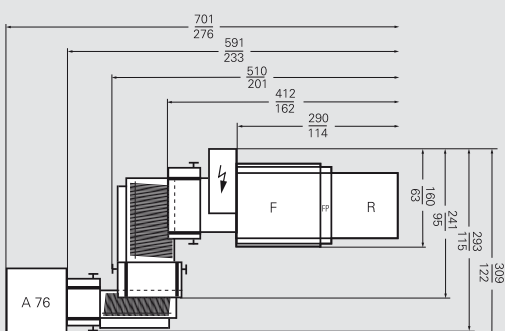
Alternative/additional equipment

- F 765 pile feeder with VACUSTAR feeder head
- FP 765/95 palletized feeder with FLS feeder loading system and VACULIFT feeder head, 95cm pile height
- VACULIFT III feeder head instead of VACULIFT feeder head for FP 765/95
- FLS feeder loading system for F 765 pile feeder
- DATAMANAGER for job management and workflow integration
- RAS remote maintenance
- VIVAS vacuum infeed and alignment system
- Extension to 6 buckle plates
- WINPLATE gatefold plate
- Preparation for gatefold plate on FU II
- Sheet monitoring with conveyor table
- Noise damping device
- Double stream device
- Gully-cut device
- Edge-trim device
- Multiple perforation device
- Punch perforation device

Buckle folding machines T 765 Efficiency Automatic

Machine		T 765 EA-F		T 765 EA-FP		T 765 EA-R		FW II 765 EA		FW III 385 EA	
		cm	Inch	cm	Inch	cm	Inch	cm	Inch	cm	Inch
Infeed width	Min.	15	5 7/8	17	6 3/4	15	5 7/8	-	-	-	-
	Max.	76	29 7/8	76	29 7/8	76	29 7/8	76	29 7/8	38	15
Infeed length	Min.	20	7 7/8	25	9 7/8	18	7 1/8	-	-	-	-
	Max.	120	47 1/4	120	47 1/4	108 (200)	42 1/2	-	-	-	-
Folding length of NIRO buckle plate 1	Min.	6	2 3/8	6	2 3/8	6	2 3/8	6	2 3/8	6	2 3/8
	Max.	66	26	66	26	66	26	-	-	-	-
Combiplates											
Buckle plate 1	Max.	-	-	-	-	-	-	66	26	35	13 3/4
Buckle plate 2	Max.	51	20 1/8	51	20 1/8	51	20 1/8	43	16 7/8	35	13 3/4
Other buckle plates	Max.	43	16 7/8	43	16 7/8	43	16 7/8	43	16 7/8	35	13 3/4
Number of buckle plates	Min.	4		4		4		4		4	
	Max.	6		6		6		6		4	
		mm	Inch	mm	Inch	mm	Inch	mm	Inch	mm	Inch
Fold roller diameter		43,70	1 3/4	43,70	1 3/4	43,70	1 3/4	43,70	1 3/4	43,70	1 3/4
Slitter shaft diameter		35	1 3/8	35	1 3/8	35	1 3/8	35	1 3/8	35	1 3/8
Product thickness	Max.	1,80	1/16	1,80	1/16	1,80	1/16	1,80	1/16	1,80	1/16
		m/min	Inch/min	m/min	Inch/min	m/min	Inch/min	m/min	Inch/min	m/min	Inch/min
VARIO-Control speed	Min.	10	394	10	394	10	394	10	394	10	394
	Max.	205	8071	205	8071	205	8071	205	8071	205	8071
VARIO-Control drive control	Can be regulated electronically; input via touch screen										

Compact and space-saving: The basic design of the T 765 Efficiency Automatic



Dimensions in $\frac{\text{cm}}{\text{Inch}}$

MBO Maschinenbau
Oppenweiler Binder GmbH & Co. KG
Grabenstraße 4
71570 Oppenweiler
Deutschland

Tel. +49 (0) 7191/46-0 • Fax +49 (0) 7191/46-34
info@mbo-folder.com • www.mbo-folder.com